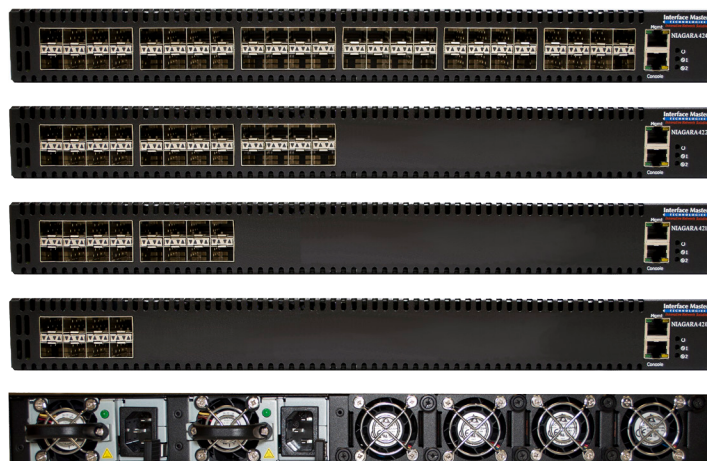


## Overview

The Niagara 4248 family is a Hardware-based Traffic Distribution and Loadbalancing/PacketMaster system family. The Niagara 4248 family has flexible and extensive configuration options. The systems can support L2-L4 packets, IP traffic, MPLS packets, and it provides the ability to customize key for distribution. The ports support 1 Gigabit or 10 Gigabit Ethernet with SFP and SFP+ support including multi mode, single mode and extended mode fiber. The PacketMaster provides sophisticated features for flexible traffic management including mirroring to multiple ports, aggregation of multiple ports to a single port, and an extensive filtering engine.



## Implementations

Due to its versatility and flexibility, the system can support mirroring to multiple ports, aggregation of multiple ports to a single port, and an extensive filtering engine. There are several loadbalancing methodologies supported which enable traffic to be distributed according to any configured output of ports and the distributing key can be defined as follows:

- VLAN ID -- packets belonging to the same VLAN will be redirected to the same port.
- IP-Src -- packets belonging to the same IP source will be redirected to the same port.
- IP-Dst -- packets belonging to the same IP destination will be redirected to the same port.
- MAC-Src -- packets belonging to the same MAC source will be redirected to the same port.
- MAC-Dst -- packets belonging to the same MAC destination will be redirected to the same port.
- TCP-Port -- packets with the same TCP port will be redirected to the same port.
- UDP-Port -- packets with the same UDP port will be redirected to the same port.
- User Defined Byte (UDB) - where the key for distribution is configurable and all the packets with the same key will be redirected to the same port.

## Key Features

- Load balancing according to multiple key definitions
- MPLS, Q in Q support
- Session aware loadbalancing
- User defined bytes for filtering
- Port failover mechanism
- Counters for ingress and egress traffic
- RMON statistics
- TACACS+ for centralized authentication
- Syslog for events logging
- SNMP management and reporting
- CLI and Web-based management and configuration
- Mirroring of one to many and any to any
- Secure logging and secure management
- Support for a total of 2000 filtering and redirection rules

Maximum Power Consumption		Environmental		Dimensions		
Niagara 4248	150 Watts	Storage Temperature	-10 °C to 70 °C (14 °F to 158 °F)		mm	inches
Niagara 4224	150 Watts			Length	279.40	11.00
Niagara 4216	150 Watts	Relative Humidity	5 to 95%	Height	40.64	1.60
Niagara 4208	150 Watts	Airflow	100 lf/m	Width	426.72	16.80

## Ordering Part Numbers

Part Number	Description
Niagara 4248- NO SFP	48 10GE port Network Packet Broker/Packet Master - No SFP+
Niagara 4224- NO SFP	24 10GE port Network Packet Broker/Packet Master - No SFP+
Niagara 4216- NO SFP	16 10GE port Network Packet Broker/Packet Master - No SFP+
Niagara 4208- NO SFP	8 10GE port Network Packet Broker/Packet Master - No SFP+
Niagara 4224-SR	24 10GE port Network Packet Broker/PacketMaster- multi mode interfaces
Niagara 4216-SR	16 10GE port Network Packet Broker/PacketMaster- multi mode interfaces
Niagara 4208-SR	8 10GE port Network Packet Broker/PacketMaster- multi mode interfaces
Niagara 4224-LR	24 10GE port Network Packet Broker/PacketMaster- single mode interfaces
Niagara 4216-LR	16 10GE port Network Packet Broker/PacketMaster- single mode interfaces
Niagara 4208-LR	8 10GE port Network Packet Broker/PacketMaster- single mode interfaces

## Product Line

- Network Interface Cards with Bypass
- Network Interface Cards without Bypass
- External Bypass Products
- SSL/IPSec Cards
- Embedded Switches
- Embedded Platforms
- Development Tools
- TAP Systems

## About Interface Masters Technologies, Inc.

[Interface Masters Technologies](#) is a leading vendor in the network monitoring and high speed networking markets. Based in the heart of the Silicon Valley, Interface Masters' expertise lies in Gigabit, 10 Gigabit and 40 Gigabit Ethernet network access and network connectivity solutions that integrate with monitoring systems, inline networking appliances, IPS, UTM, Load Balancing, WAN acceleration, and other mission-critical IT and security appliances.

Flagship product lines include [hardware load-balancers](#), [specialized 10GE internal server adapter cards](#), switches, [10 Gigabit external intelligent Network TAP](#) and [Bypass](#) and [failover](#) systems that increase network visibility capabilities, network reliability and inline appliance availability.

Company Headquarters is located in San Jose, CA with satellite offices in Hong Kong and Europe.



## Contact Interface Masters

150 East Brokaw Rd, San Jose, CA 95112  
 Phone: 408-441-9341 x122  
 Fax: 815-364-0888  
 Email: [sales@interfacemasters.com](mailto:sales@interfacemasters.com)  
 Web: [www.interfacemasters.com](http://www.interfacemasters.com)

# Interface Masters

TECHNOLOGIES

*Innovative Network Solutions*